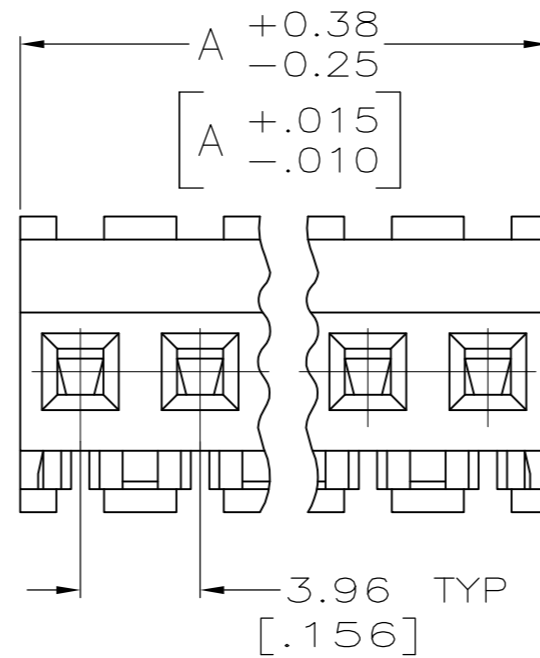
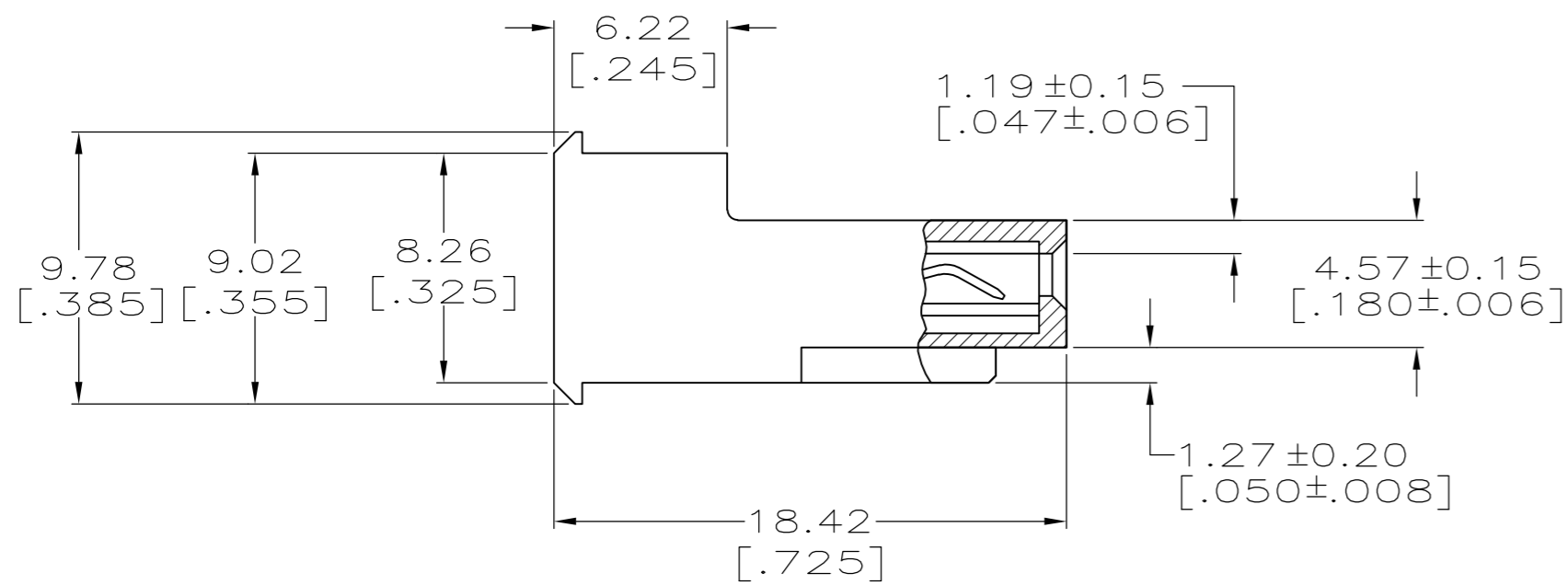
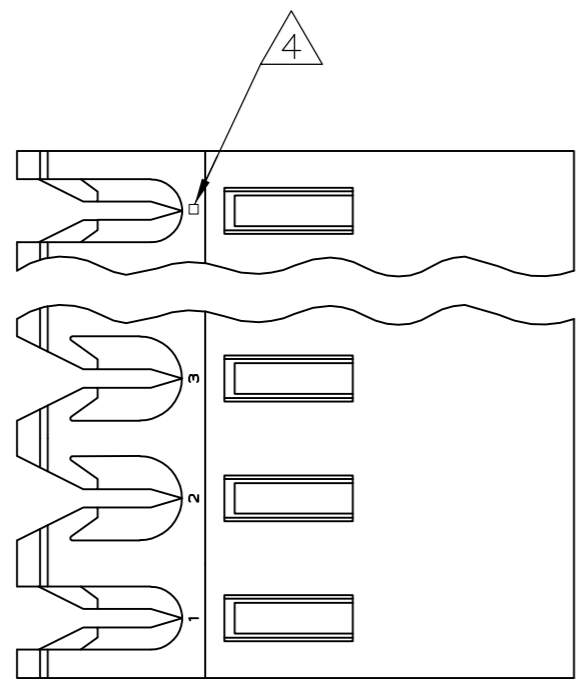


THIS DRAWING IS UNPUBLISHED. RELEASED FOR PUBLICATION  
 © COPYRIGHT BY TYCO ELECTRONICS CORPORATION. ALL RIGHTS RESERVED.

LOC	DIST	REVISIONS			
P	LTR	DESCRIPTION	DATE	DWN	APVD
CM	0	H	ECO-07-012887	22JUN07	KW DB



CONTACT FINISH	DIM A	NO. OF CIRCUITS	PART NO.
TIN	95.10 [3.744]	24	5-641177-4
	91.14 [3.588]	23	5-641177-3
	87.17 [3.432]	22	5-641177-2
	83.21 [3.276]	21	5-641177-1
	79.25 [3.120]	20	5-641177-0
	75.29 [2.964]	19	4-641177-9
	71.32 [2.808]	18	4-641177-8
	67.36 [2.652]	17	4-641177-7
	63.40 [2.496]	16	4-641177-6
	59.44 [2.340]	15	4-641177-5
	55.47 [2.184]	14	4-641177-4
	51.51 [2.028]	13	4-641177-3
	47.55 [1.872]	12	4-641177-2
	43.59 [1.716]	11	4-641177-1
	39.62 [1.560]	10	4-641177-0
	35.66 [1.404]	9	3-641177-9
	31.70 [1.248]	8	3-641177-8
	27.74 [1.092]	7	3-641177-7
	23.77 [.936]	6	3-641177-6
	19.81 [.780]	5	3-641177-5
	15.85 [.624]	4	3-641177-4
	11.89 [.468]	3	3-641177-3
	7.92 [.312]	2	3-641177-2
	TIN-LEAD	95.10 [3.744]	24
91.14 [3.588]		23	2-641177-3
87.17 [3.432]		22	2-641177-2
83.21 [3.276]		21	2-641177-1
79.25 [3.120]		20	2-641177-0
75.29 [2.964]		19	1-641177-9
71.32 [2.808]		18	1-641177-8
67.36 [2.652]		17	1-641177-7
63.40 [2.496]		16	1-641177-6
59.44 [2.340]		15	1-641177-5
55.47 [2.184]		14	1-641177-4
51.51 [2.028]		13	1-641177-3
47.55 [1.872]		12	1-641177-2
43.59 [1.716]		11	1-641177-1
39.62 [1.560]		10	1-641177-0
35.66 [1.404]		9	641177-9
31.70 [1.248]		8	641177-8
27.74 [1.092]		7	641177-7
23.77 [.936]		6	641177-6
19.81 [.780]		5	641177-5
15.85 [.624]		4	641177-4
11.89 [.468]		3	641177-3
7.92 [.312]		2	641177-2

1 MATERIAL:  
 CONNECTOR - NYLON UL94V-2 (BLUE).  
 CONTACTS - 0.30[.012] THICK COPPER ALLOY.  
 PLATING - 0.00038[.000015] GOLD IN CONTACT AREA.  
 0.00203[.000080] MIN THICKNESS BRIGHT TIN-LEAD IN SLOT AREA FOR 641177-2 THRU 2-641177-4 OR MATTE WHISKER MITIGATED TIN IN SLOT AREA FOR 3-641177-2 THRU 5-641177-4 OVER NICKEL UNDERPLATE.

- 2. CONTACTS ACCEPT 26 AWG WIRE WITH 2.41[.095] MAX INSULATION DIAMETER.
- 3. CONTACTS MUST ACCEPT 1.14±0.03[.045±.001] SQUARE POST AND REMAIN LOCKED IN POSITION.

4 IDENTIFICATION NUMBER FOR LAST CIRCUIT MAY NOT APPEAR ON ALL ASSEMBLIES.

5. DIMENSIONS IN BRACKETS ARE IN INCHES.

6. HOUSING FEATURES ARE: FEED-THRU WITHOUT LOCKING RAMP.

7 NOTE DELETED.

8 NOTE DELETED.

METRIC

THIS DRAWING IS A CONTROLLED DOCUMENT.

DWN B. LEWIS 3-11-96	CHK R. SWING 3-11-96	APVD -	NAME Tyco Electronics Corporation Harrisburg, Pa 17105-3608
DIMENSIONS: mm [INCHES]		TOLERANCES UNLESS OTHERWISE SPECIFIED: 0 PLC ± - 1 PLC ± - 2 PLC ± - 3 PLC ± 0.13 [.005] 4 PLC ± - ANGLES ± -	PRODUCT SPEC 108-1051 APPLICATION SPEC 114-1020
MATERIAL -	FINISH -	WEIGHT -	SIZE A2
CUSTOMER DRAWING		SCALE 4:1	SHEET 1 OF 1

RESTRICTED TO  
 MTA-156 CONNECTOR ASSEMBLY,  
 26 AWG, STANDARD  
 CAGE CODE 00779  
 DRAWING NO C-641177